

WARNING

Make sure the wide orange ribbon is inserted the right way into it's connector. If it's inserted the wrong way, YOU WILL FRY THE SCREEN.

The pin order on the ribbons are reversed between the Live & ONE.

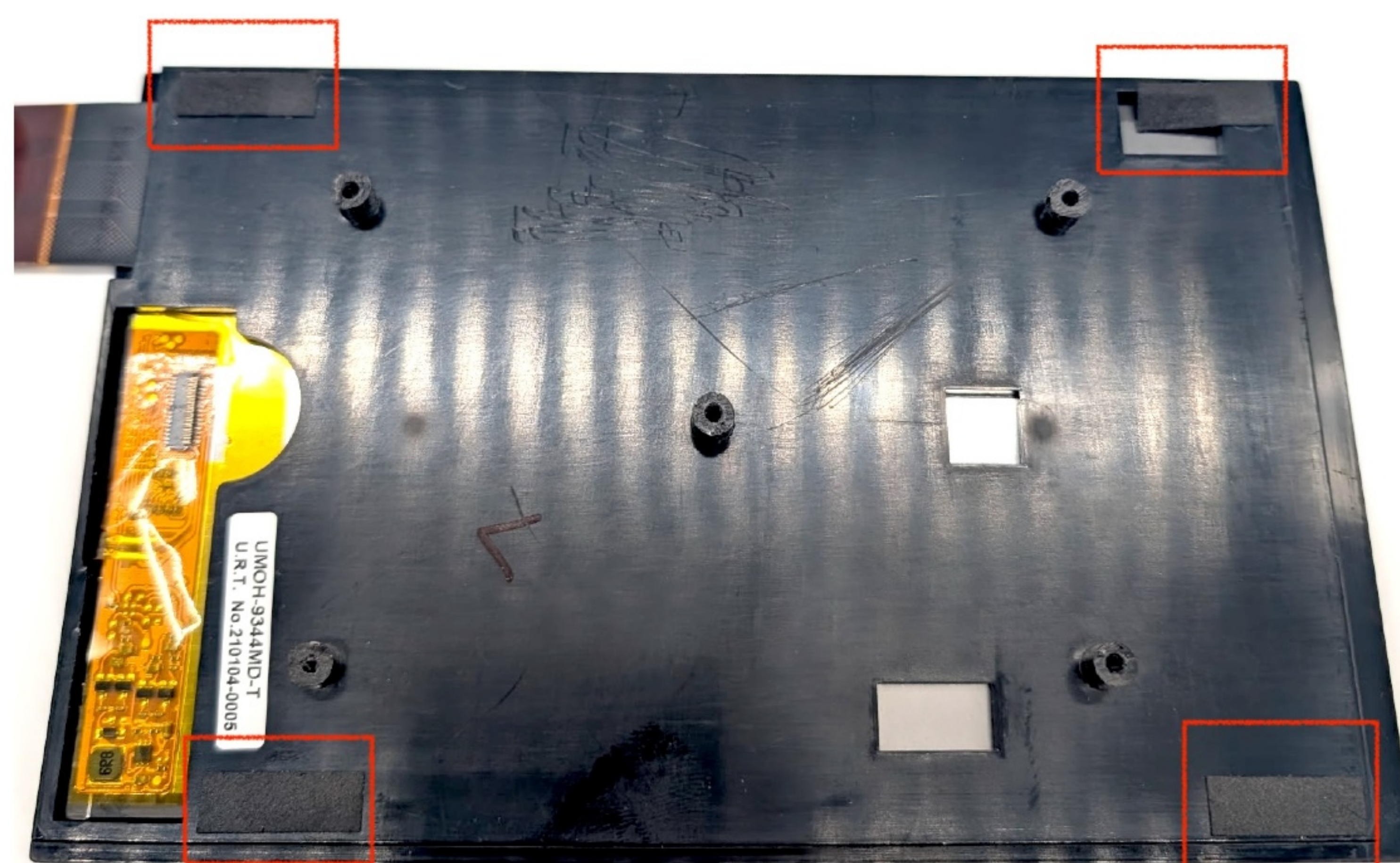
It's best to take a photo of your cables before they're disconnected, so you can easily identify for yourself.

Live 1 & 2

The copper pins face down into the main board, but up into the screen.

ONE & ONE+

The copper pins face up into the main board, but down into the screen.



Remove Foam Tabs for easier install.

